

---

## **WLGS 1 Baad Park Burn 1 & 2 [NT 1125 6014] and [NT 1103 6037] (Figure 16), (Figure 17), (Figure 18), (Figure 19), (Figure 20)**

[WLC site description](#)

[Part of the Inverclyde Group sites](#)

Other designations: Pentland Hills Regional Park; AGLV

These two sites are on the Baad Park Burn to the south-east of Harperrig Reservoir (Figure 13). They are within the Pentland Hills Regional Park and close to a popular walking route following an old drove road over the Pentland Hills (Figure 14) from Little Vantage on the A70 to West Linton. At Baad Park Burn [NT 1125 6014] (Figure 15) a section of the lower part of the Ballagan Formation is exposed. This location also gives views of the Cairn Hills (Figure 16), (Figure 17). At Baad Park Burn 2 [NT 1103 6037] (Figure 18) good sedimentary structures are present in red sandstone outcrops, the former demonstrating good small-scale scarp featuring.

(Figure 13) Scheduled Monuments and archaeological sites of West Lothian.

(Figure 14) West Lothian Geodiversity Sites (WLGS).

(Figure 16) View across Harperrig Reservoir from Auchinoon Quarry (WLGS 36) beside the A70. The south-east boundary of West Lothian runs along the skyline from East Cairn Hill to West Cairn Hill. Inverclyde Group rocks form the hills and most of the low ground beyond the reservoir.

(Figure 17) Section in gently dipping mudstones, siltstones and thin sandstones of the Ballagan Formation (Inverclyde Group) capped by glacial till. Section approximately 5 m high. Baad Park Burn (WLGS 1) [NT 1125 6014], south-east of Harperrig Reservoir

(Figure 18) West Lothian's highest hill — West Cairn Hill (562m) from Baad Park Burn, south-east of Harperrig Reservoir. West Cairn Hill is formed from Kinnesswood Formation (Inverclyde Group) sandstones. WLGS 2 is located close to the break of slope on the right skyline of the hill.

(Figure 19) East Cairn Hill (561 m summit) from Baad Park Burn (WLGS 1), south-east of Harperrig Reservoir. The gently-inclined Kinnesswood Formation (Inverclyde Group) sandstones show small-scale scarp featuring.

(Figure 20) Laminated and cross-bedded red sandstones of the Ballagan Formation (Inverclyde Group). Baad Park Burn (WLGS 1) [NT 1103 6037], south-east of Harperrig Reservoir. East Cairn Hill in background.

### **WLGS 1 Baad Park Burn [NT 1125 6014] (Figure 17)**

[Part of the Quaternary deposits, landscapes and soils sites](#)

Other designations: Pentland Hills Regional Park; AGLV

A section in the Ballagan Formation is capped by about 1 m of glacial till.



*(Figure 16) View across Harperrig Reservoir from Auchinoon Quarry (WLGS 36) beside the A70. The south-east boundary of West Lothian runs along the skyline from East Cairn Hill to West Cairn Hill. Inverclyde Group rocks form the hills and most of the low ground beyond the reservoir.*



*(Figure 17) Section in gently dipping mudstones, siltstones and thin sandstones of the Ballagan Formation (Inverclyde Group) capped by glacial till. Section approximately 5 m high. Baad Park Burn (WLGS 1) [NT 1125 6014], south-east of Harperrig Reservoir*



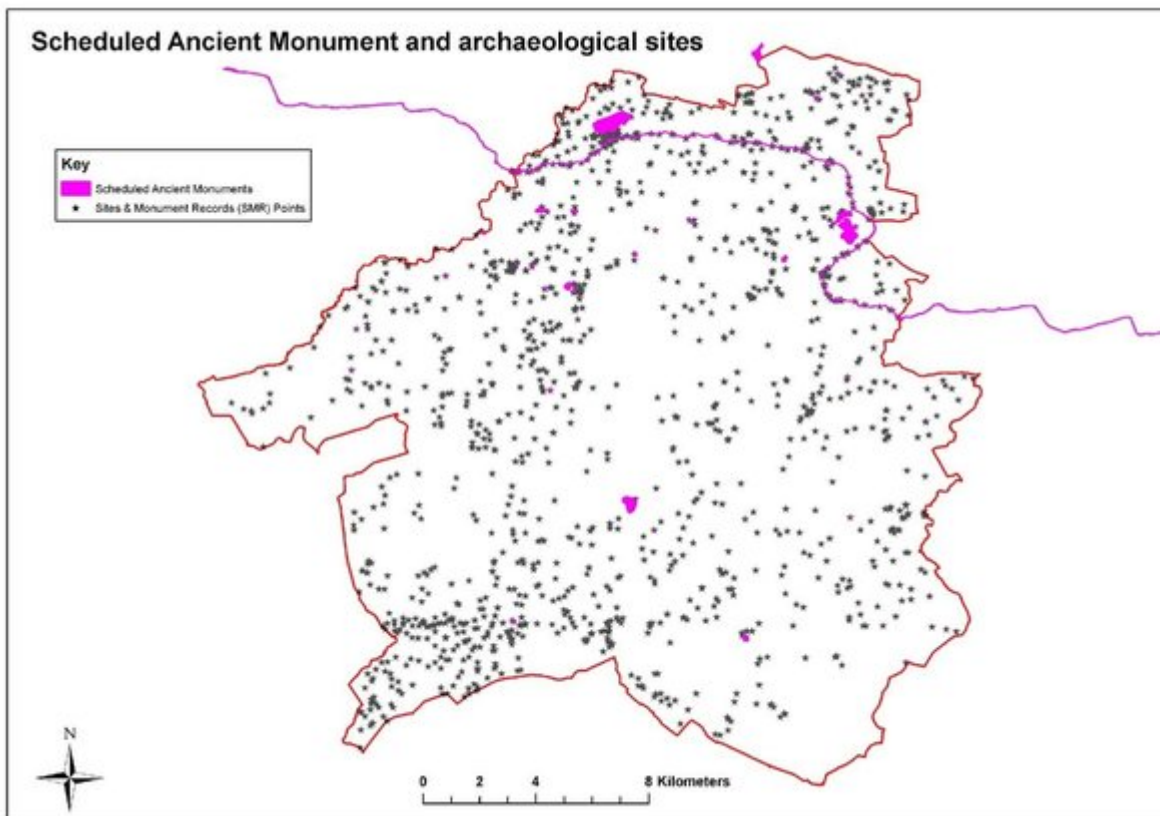
*(Figure 18) West Lothian's highest hill — West Cairn Hill (562m) from Baad Park Burn, south-east of Harperrig Reservoir. West Cairn Hill is formed from Kinesswood Formation (Inverclyde Group) sandstones. WLGS 2 is located close to the break of slope on the right skyline of the hill.*



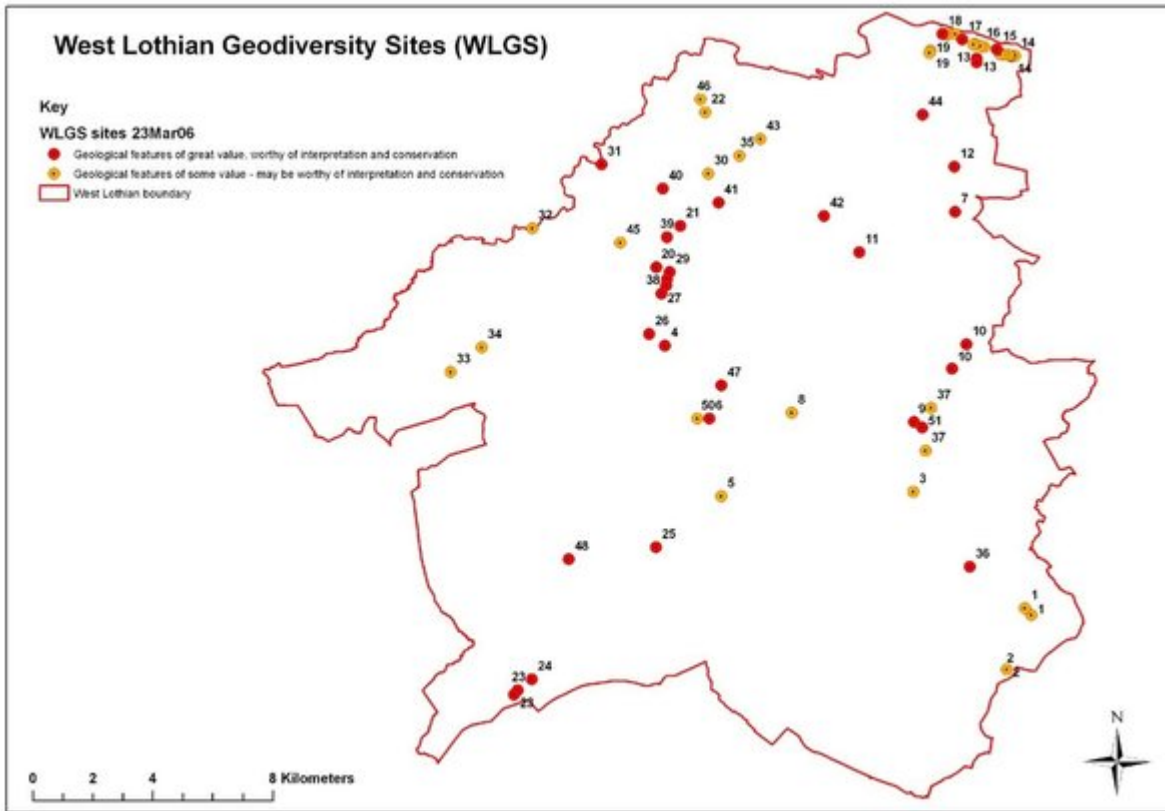
*(Figure 19) East Cairn Hill (561 m summit) from Baad Park Burn (WLGS 1), south-east of Harperrig Reservoir. The gently-inclined Kinesswood Formation (Inverclyde Group) sandstones show small-scale scarp featuring.*



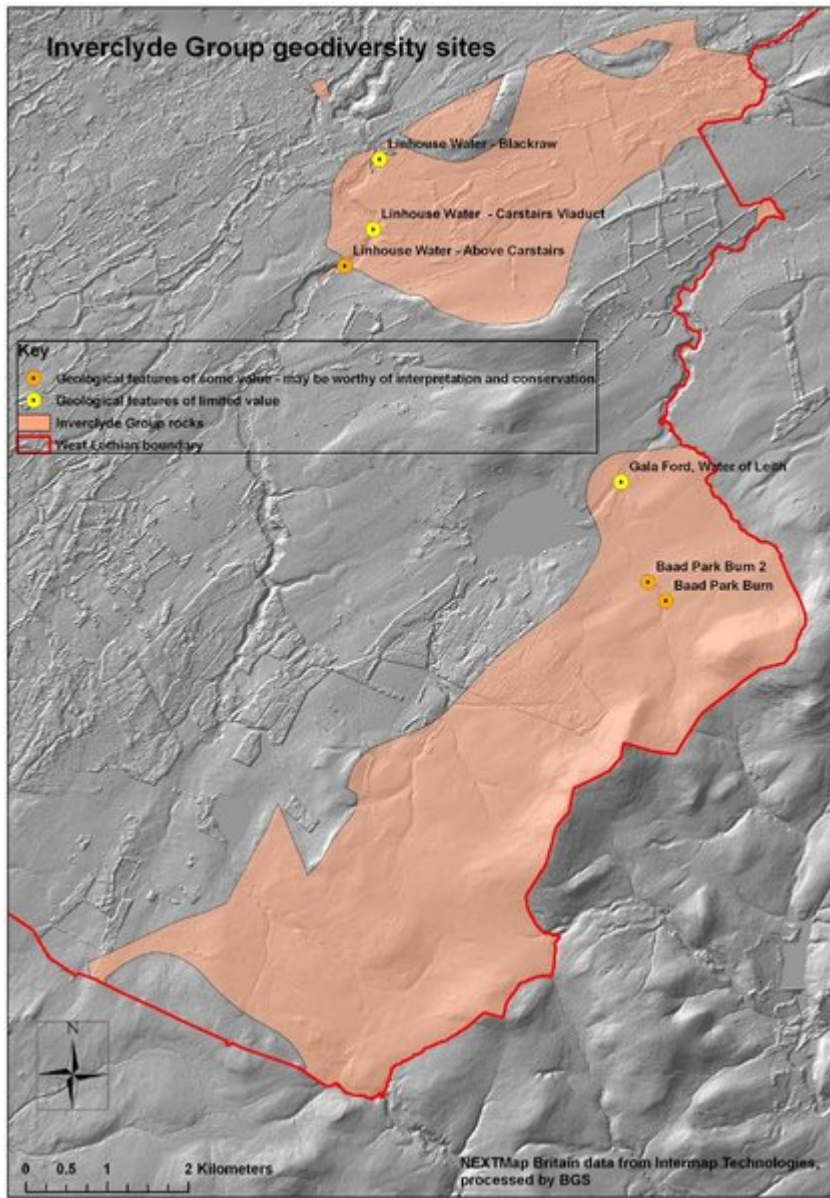
(Figure 20) Laminated and cross-bedded red sandstones of the Ballagan Formation (Inverclyde Group). Baad Park Burn (WLGS 1) [NT 1103 6037], south-east of Harperrig Reservoir. East Cairn Hill in background.



(Figure 13) Scheduled Monuments and archaeological sites of West Lothian.



(Figure 14) West Lothian Geodiversity Sites (WLGS).



(Figure 15) Inverclyde Group geodiversity sites of West Lothian.