

## North West Highland Geopark : location maps

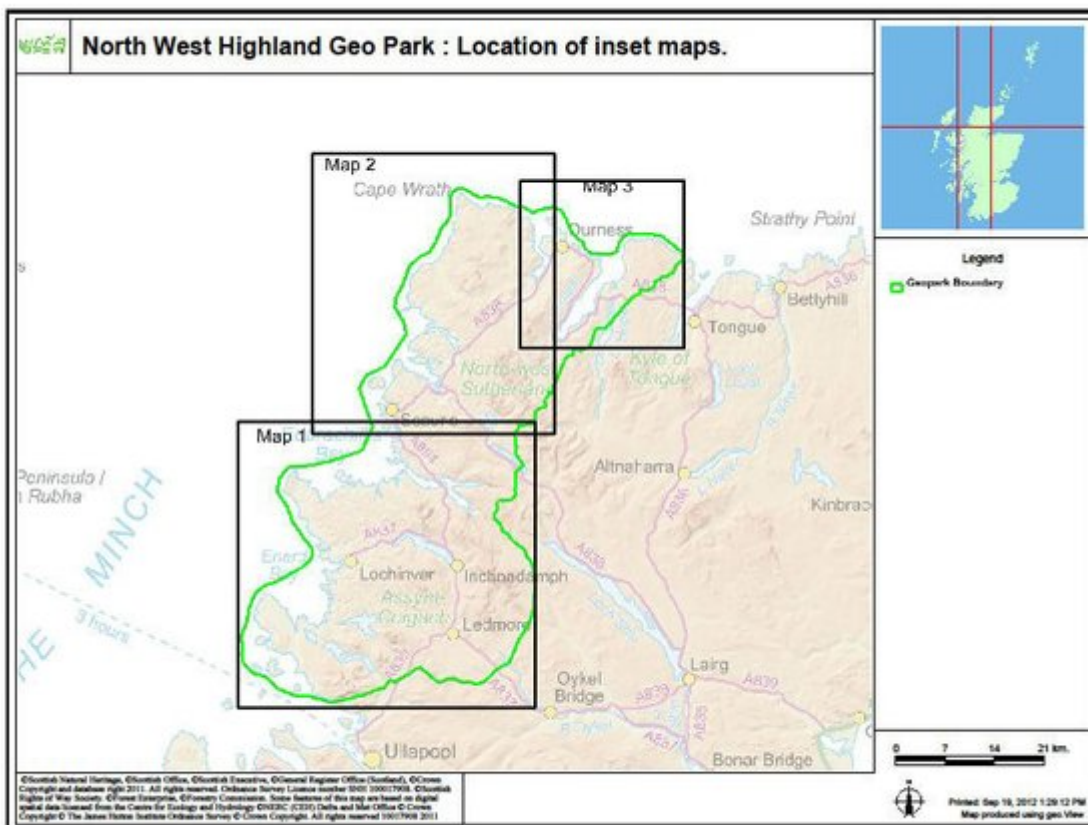
(Figure 3) Location of inset maps.

(Figure 4) Inset map 1. Lochinver and area.

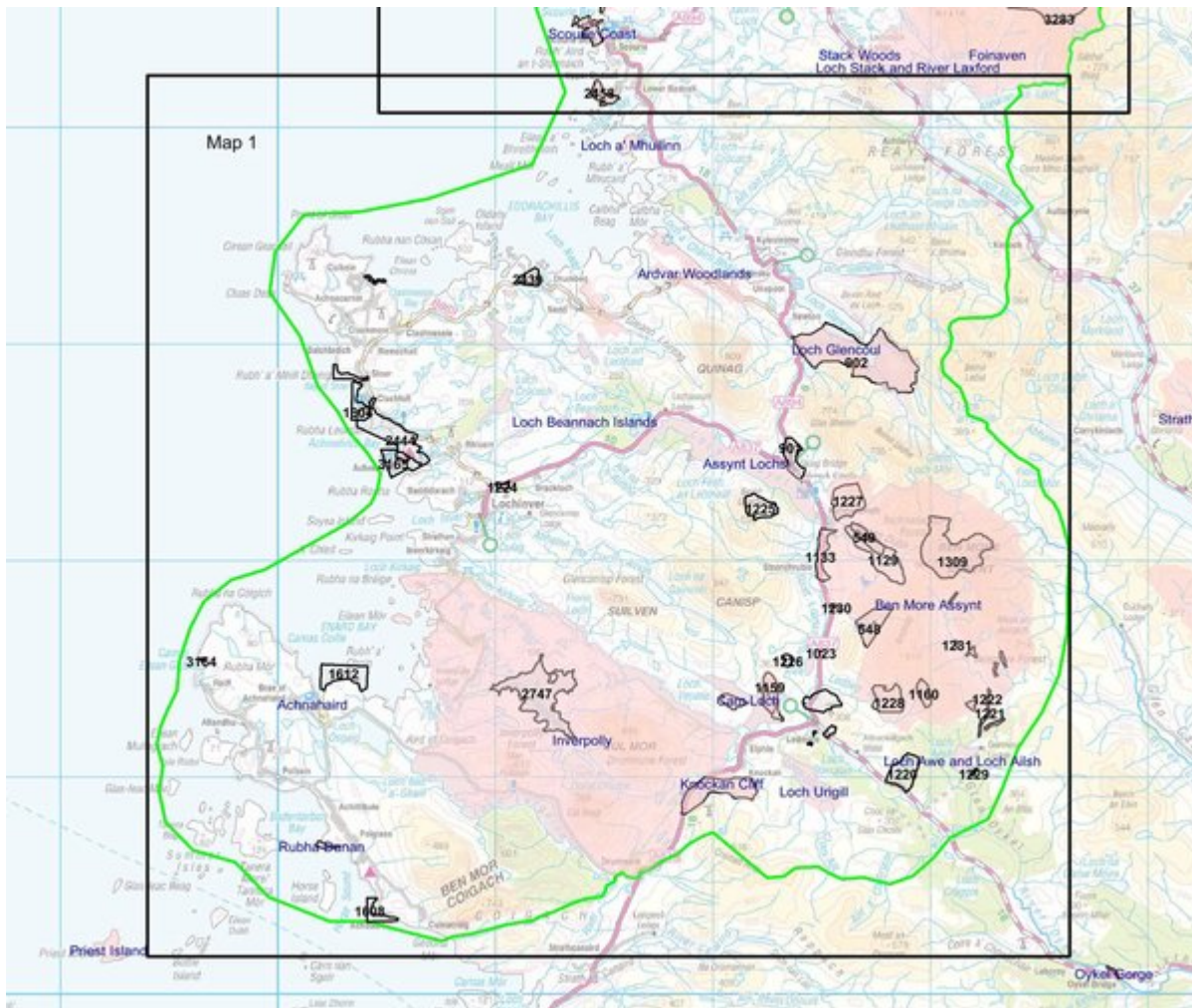
(Figure 5) Inset map 2. Handa Island to Cape Wrath.

(Figure 6) Inset map 3. Durness.

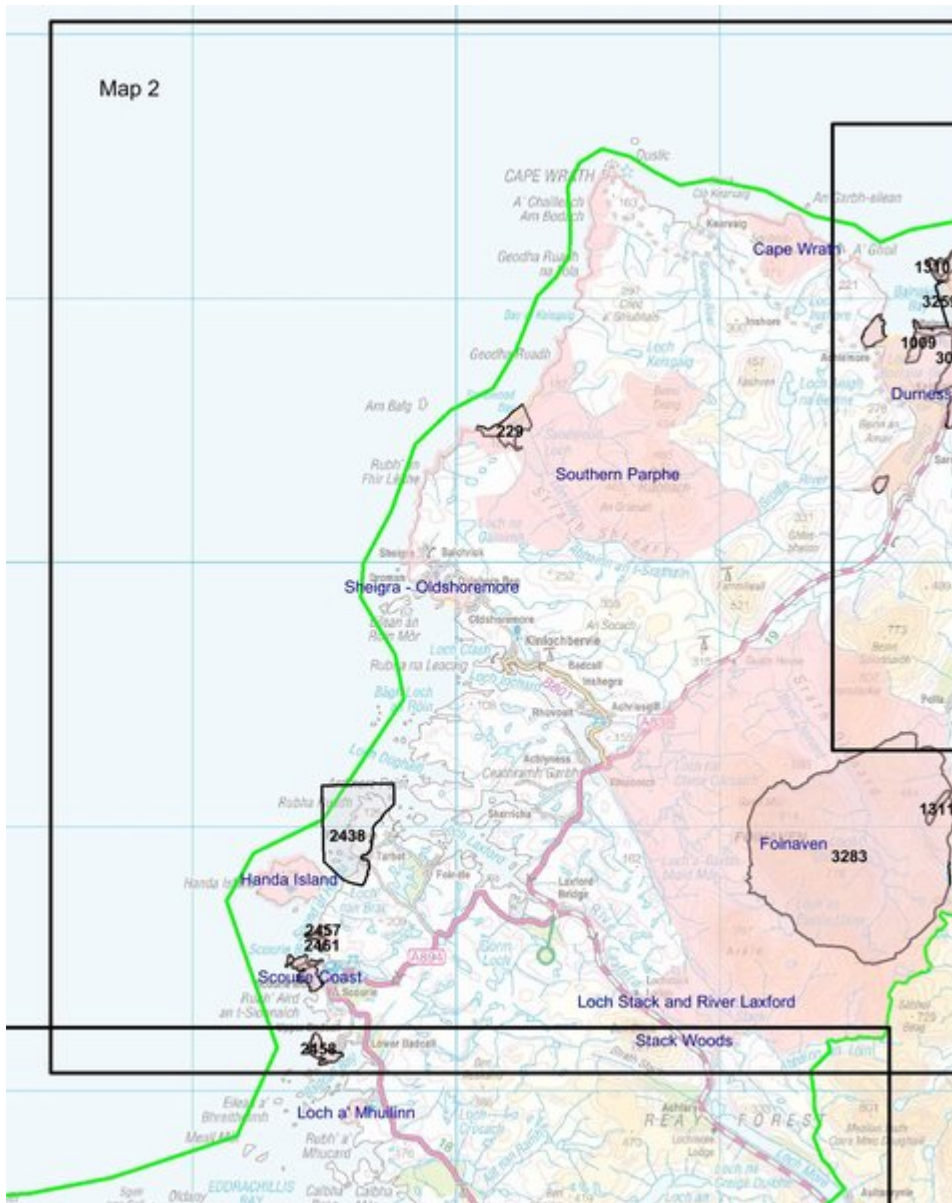
Copyright © Crown Copyright and database right 2012. All rights reserved. Ordnance Survey Licence number SNH 100017908



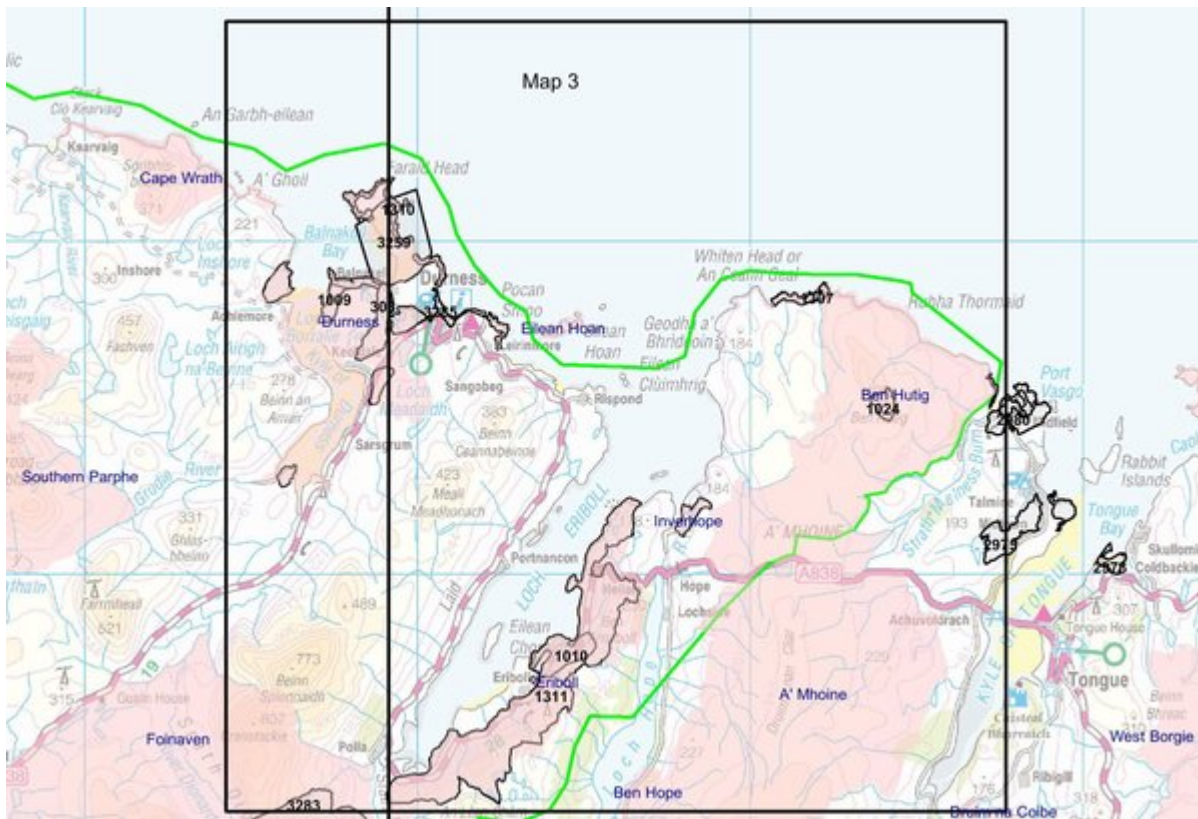
(Figure 3) Location of inset maps.



(Figure 4) Inset map 1. Lochinver and area.



(Figure 5) Inset map 2. Handa Island to Cape Wrath.



(Figure 6) Inset map 3. Durness.